



7 SEPTEMBER 2023

IMPROVING DATA SYSTEMS FOR SANITATION

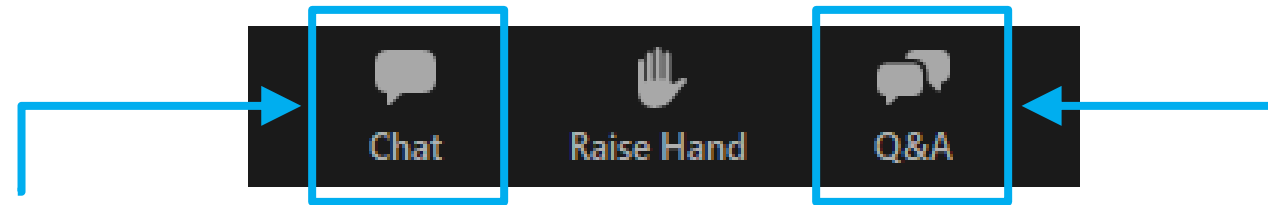
inspiring change

WEBINAR INFORMATION



- This webinar will be **recorded and made available “on-demand”** on the [IWA Connect Plus](#) platform, with presentation slides, and other information.
- The **speakers** are responsible for **securing copyright permissions** for any work that they will present of which they are not the legal copyright holder.
- The opinions, hypothesis, conclusions or recommendations contained in the presentations and other materials are the **sole responsibility of the speaker(s)** and do not necessarily reflect IWA opinion.

WEBINAR INFORMATION



- **'Chat' box:** please use this for general requests and for interactive activities.
- **'Q&A' box:** please use this to send questions to the panelists. (We will answer these during the discussions)

Please Note: Attendees' microphones are muted. We cannot respond to 'Raise Hand'.

PREVIOUS WEBINAR



6 JUNE 2023
13:00-14:30 BST

In partnership with:



REGISTER NOW

www.iwa-network.org/webinars

Key messages

- Widespread institutional strengthening (governance, finance, data, capacity, innovation) is needed to support the transition to safely managed sanitation.
- Acceleration on sanitation needs to be delivered through professionally managed and regulated services rather than via household and market-based interventions alone.

ABOUT IUS

Inclusive Urban Sanitation



- Reshape the global urban sanitation agenda by focusing on inclusive sanitation service goals – and the service systems required to achieve them – beyond infrastructure and technology.
- Engage the public, private, and academic sectors to share their experiences and define global goals and fundamentals of a **public sector** approach to **service outcomes**.
- The initiative is being progressed through the **SanitAction** campaign – IWA’s global call to action on inclusive urban sanitation.
- **Advisory Board** and **Task Force** formed.

WHAT IS HAPPENING?



IWA
the international
water association

**CALLING ALL
SANITATION
CHAMPIONS**

Nominations are now
open until
10 September 2023

iwa-network.org/projects/inclusive-sanitation-champions/

- IWA Inclusive Urban Sanitation (IUS) Champions Programme recognises excellence, leadership, and innovation in the sanitation sector.
- Open to **Individuals**, **Teams** and **Organisations**.
- The Categories for the IUS Champions programme are:
 1. IUS Champion for Policy and Regulation
 2. IUS Champion for Service Delivery
 3. IUS Champion for Communication
 4. IUS Champion for Youth Engagement
- The 2023 winners will be announced at a ceremony during the Water and Development Congress & Exhibition on 10 -14 December 2023 in Kigali, Rwanda.

MODERATOR & SPEAKERS



Batsirai Majuru
WHO
Switzerland
(Moderator)



Yvonne Magawa
ESAWAS
Zambia



Chola Mbilima
NWASCO
Zambia



Francesco Mitis
WHO/JMP
Switzerland

AGENDA

- Welcome, housekeeping rules, introduction (5 mins)
Batsirai Majuru, WHO
- Demonstrating National Level Efforts to close sanitation data gaps (10 mins)
Chola Mbilima, NWASCO
- Q&A & Ideation activity 1 (15 mins)
Batsirai Majuru, WHO
- Regional Approaches to strengthen sanitation data systems (10 mins)
Yvonne Magawa, ESAWAS
- Q&A & Ideation activity 2 (15 mins)
Batsirai Majuru, WHO
- Global efforts and monitoring sanitation for SDGs (10 mins)
Francesco Mitis, WHO/JMP
- Q&A & Ideation activity 3 (15 mins)
All speakers and moderator
- Key messages and Close (10 mins)
Batsirai Majuru, WHO



Demonstrating National Level Efforts to Close Sanitation Data Gaps- Zambia

CHOLA MBILIMA, NWASCO

inspiring change



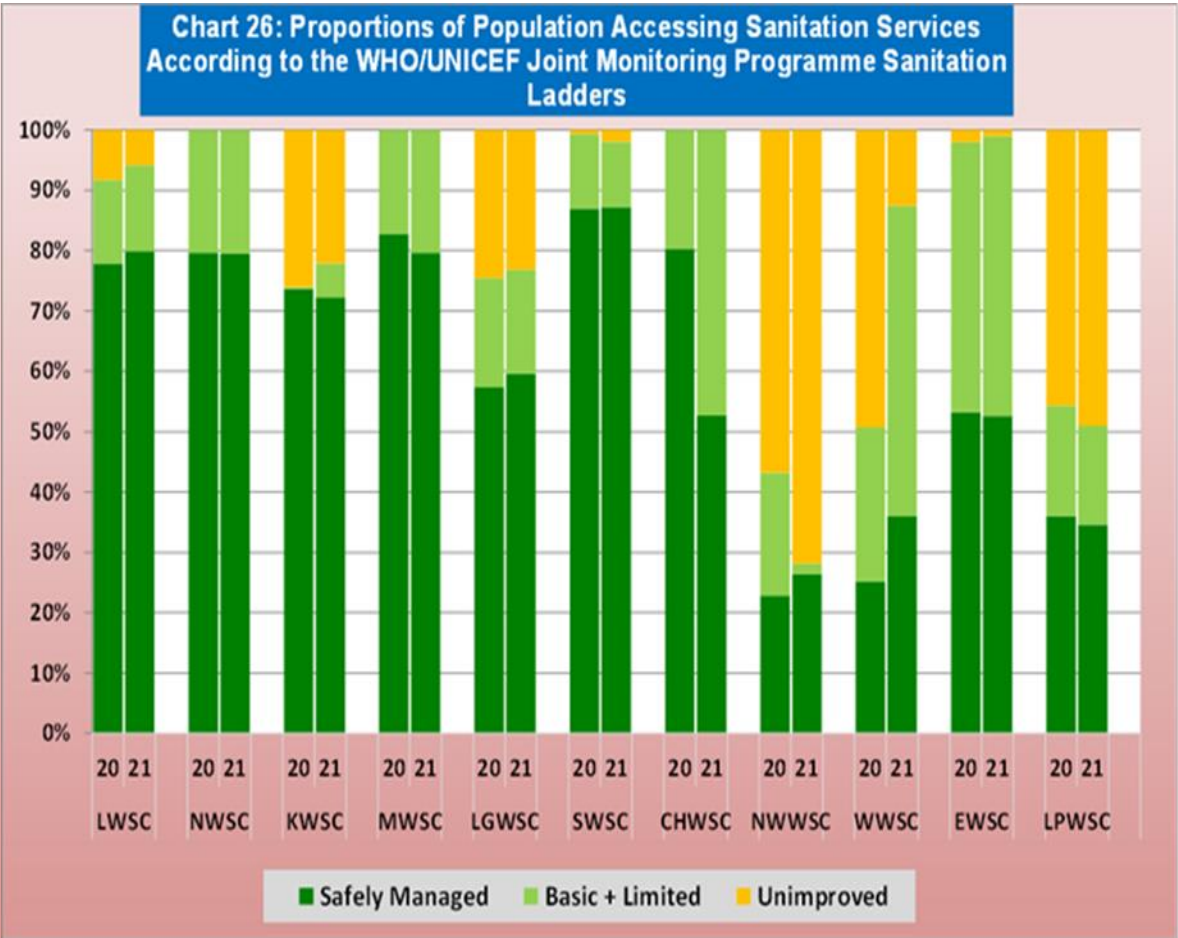
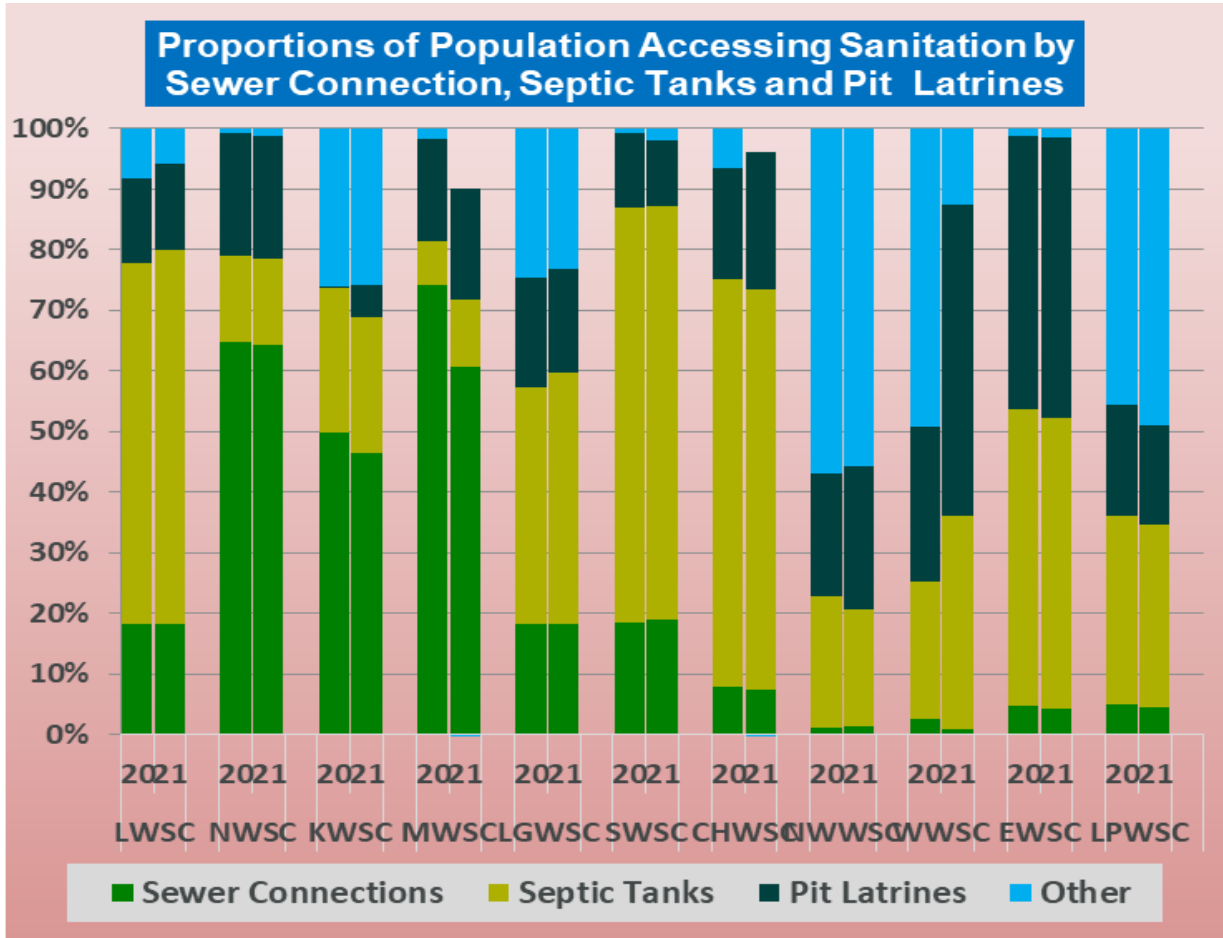
INCLUDING INCLUSIVE SANITATION DATA



Standard for sanitation facilities

Standard data collections tools-
Mwater

System for data collection



INTEGRATED MANAGEMENT INFORMATION SYSTEM

Data capture

- Robust system from service provider to regulator

Data aggregation and analysis

Visualize data in different forms, charts, tables charts, use benchmarks, JMP ladders etc
Aggregation of data to national level- ministry of water development and sanitation
Integrate other relevant data e.g climate change, health etc

Data from Sub-National to National Level

Data packaging and reporting

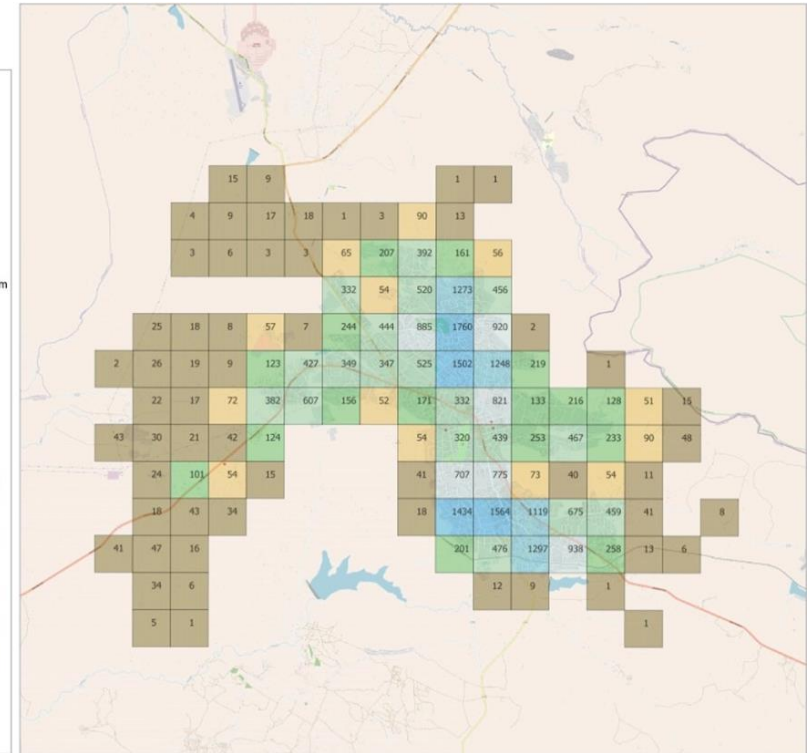
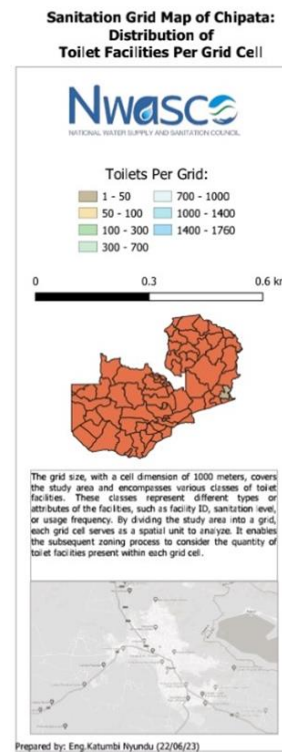
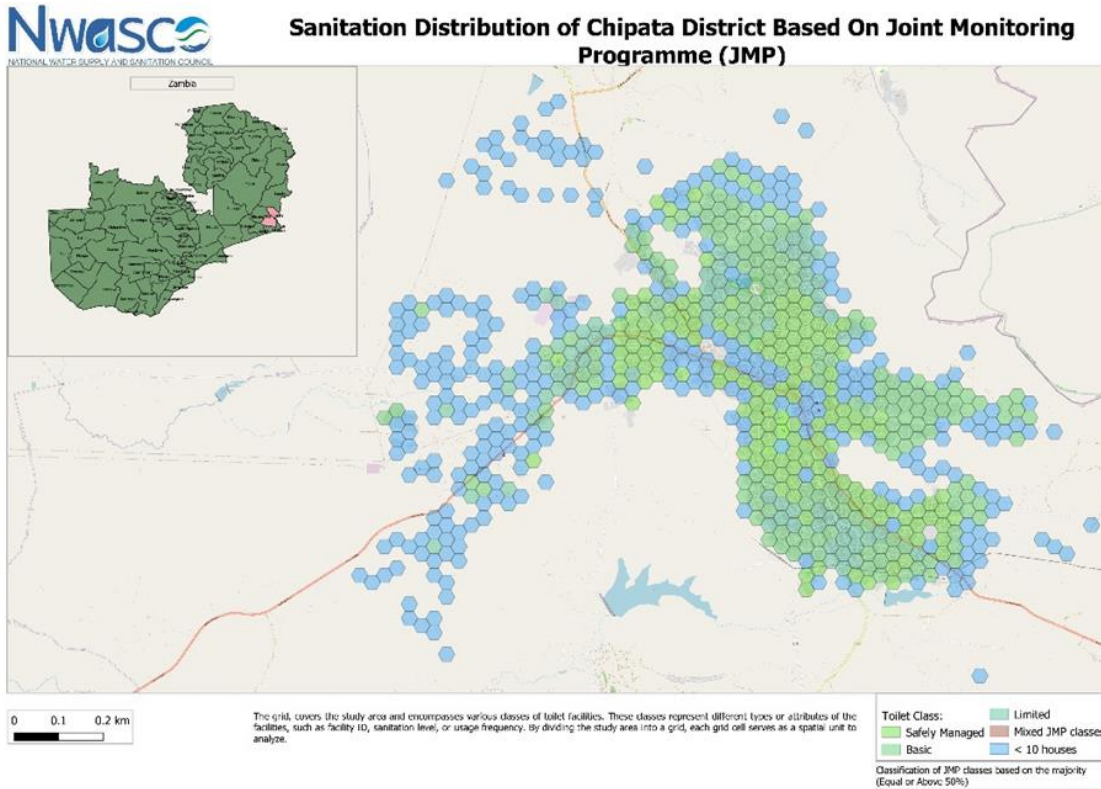
- Transform data to information- focus on the critical KPIs
- Different stakeholders different needs different information package
- Have the end in mind- keep it simple

FROM DATA TO INFORMATION FOR DECISION MAKING

Different information package for different stakeholders

GIS Mapping is Critical

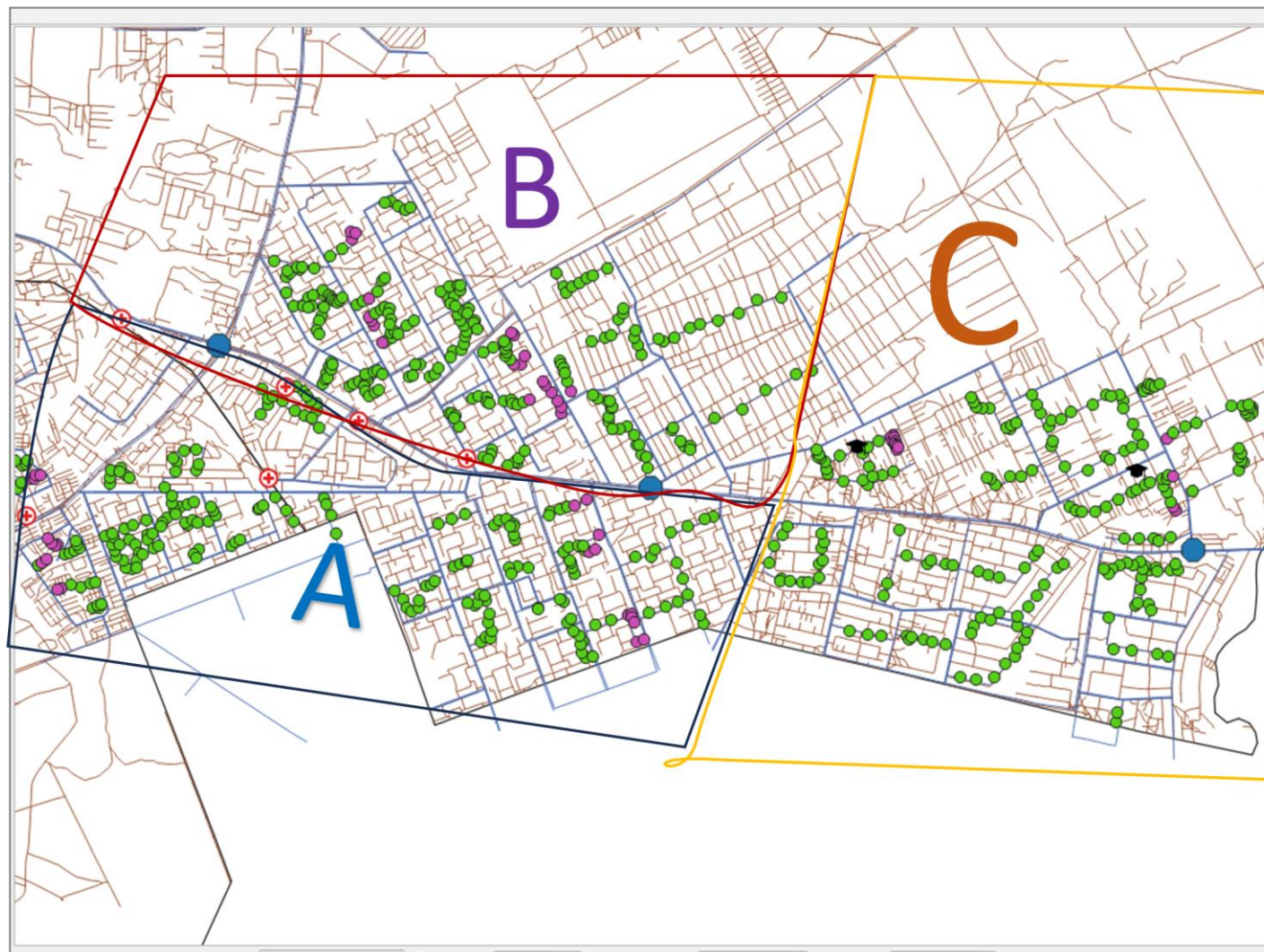
Key Message



“Simplicity is the ultimate sophistication”. *Leonardo da Vinci*

Q&A & Ideation activity 1

MODERATOR: BATSIRAI MAJURU

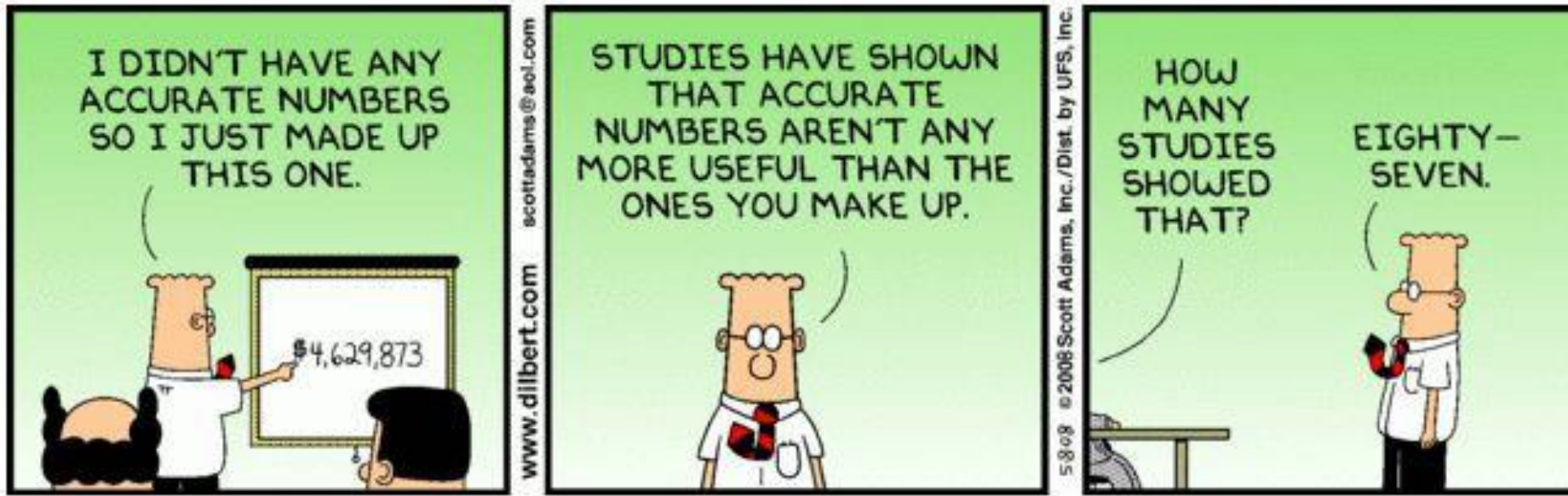


Regional Approaches to strengthen sanitation data systems

YVONNE MAGAWA, ESAWAS



SECTOR TRACKING AND REPORTING



If you can't measure it, you can't manage it

'Who has responsibility for data collection?

Do we know what we have achieved?

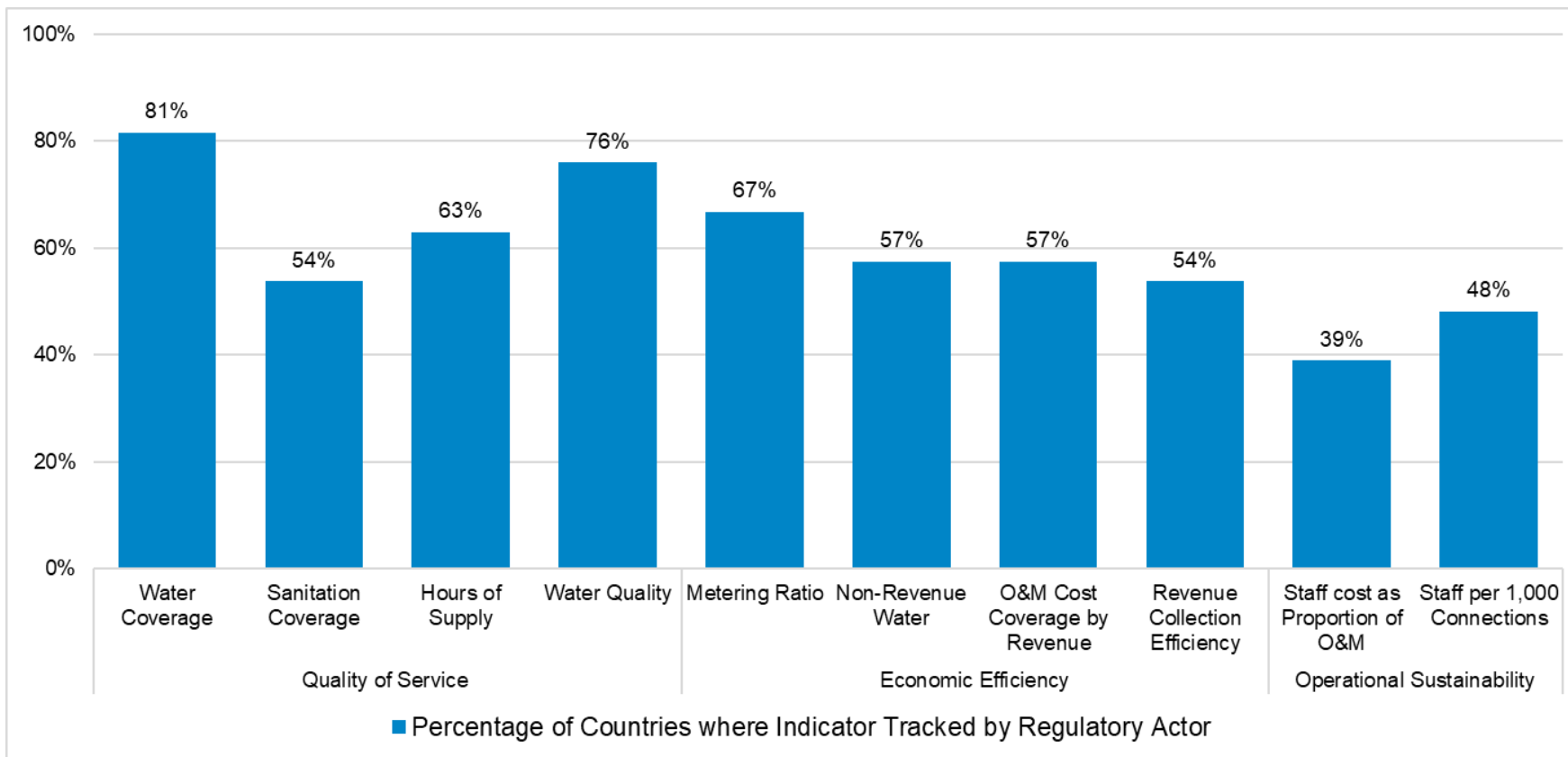
Do we know where we are going?

How do we plan interventions?'

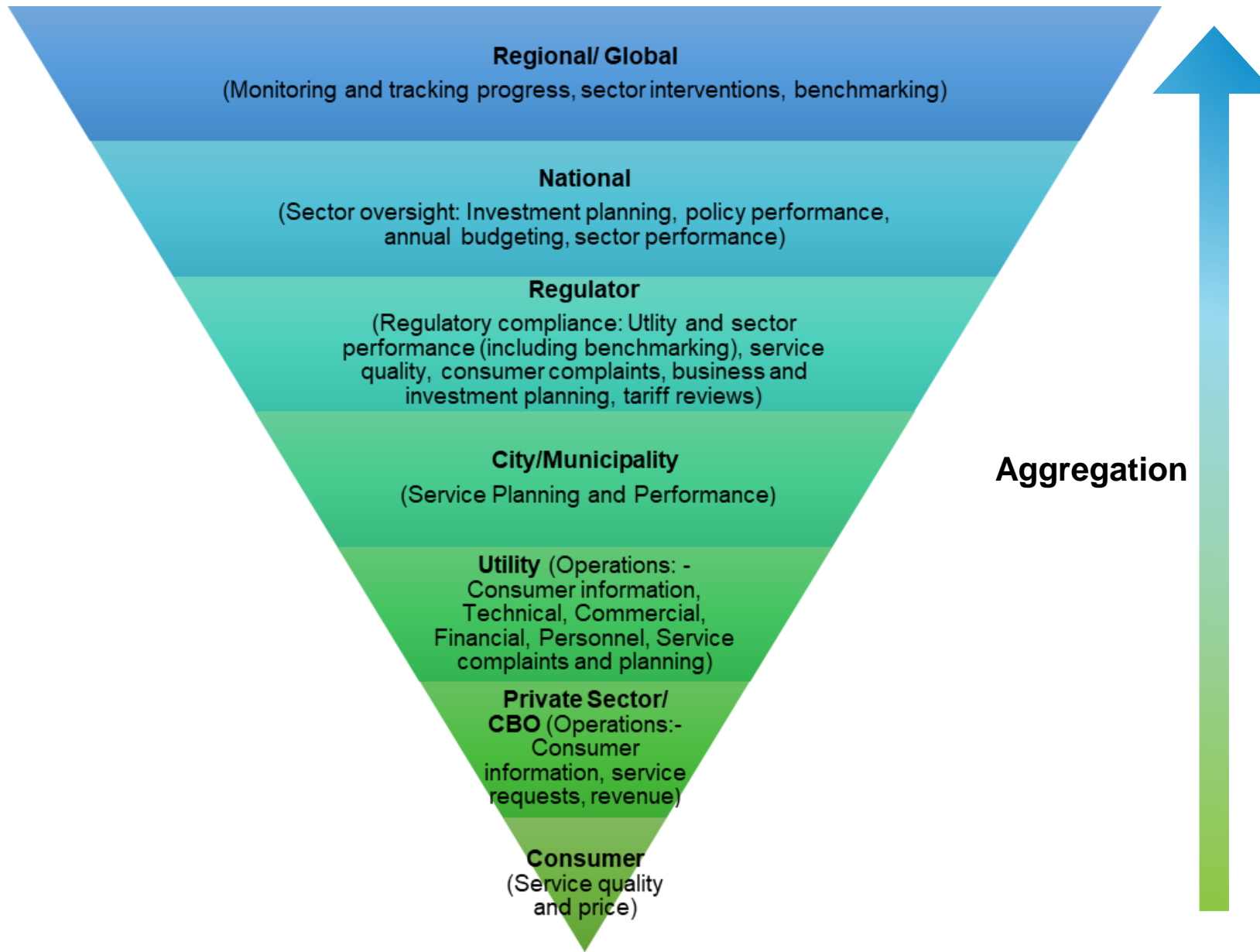


MONITORING AND PERFORMANCE REPORTING

- Core Regulatory mandate – advise on **status of the sector**
- In **56% of countries**, reports are produced on service provider performance by regulatory entities. **Benchmarking** is a key feature of especially impressive reports



THE WSS DATA PYRAMID



**Build an
accurate and
reliable
baseline**

If you don't know where you come from, it's difficult to determine where you are.- It's even more difficult to plan where you are going.

REGULATORY AND NATIONAL INFORMATION SYSTEMS

Invest in Data Infrastructure ((IMS+GIS, data collection tools) – maturity index to guide interventions

Identify system purpose

Define system users

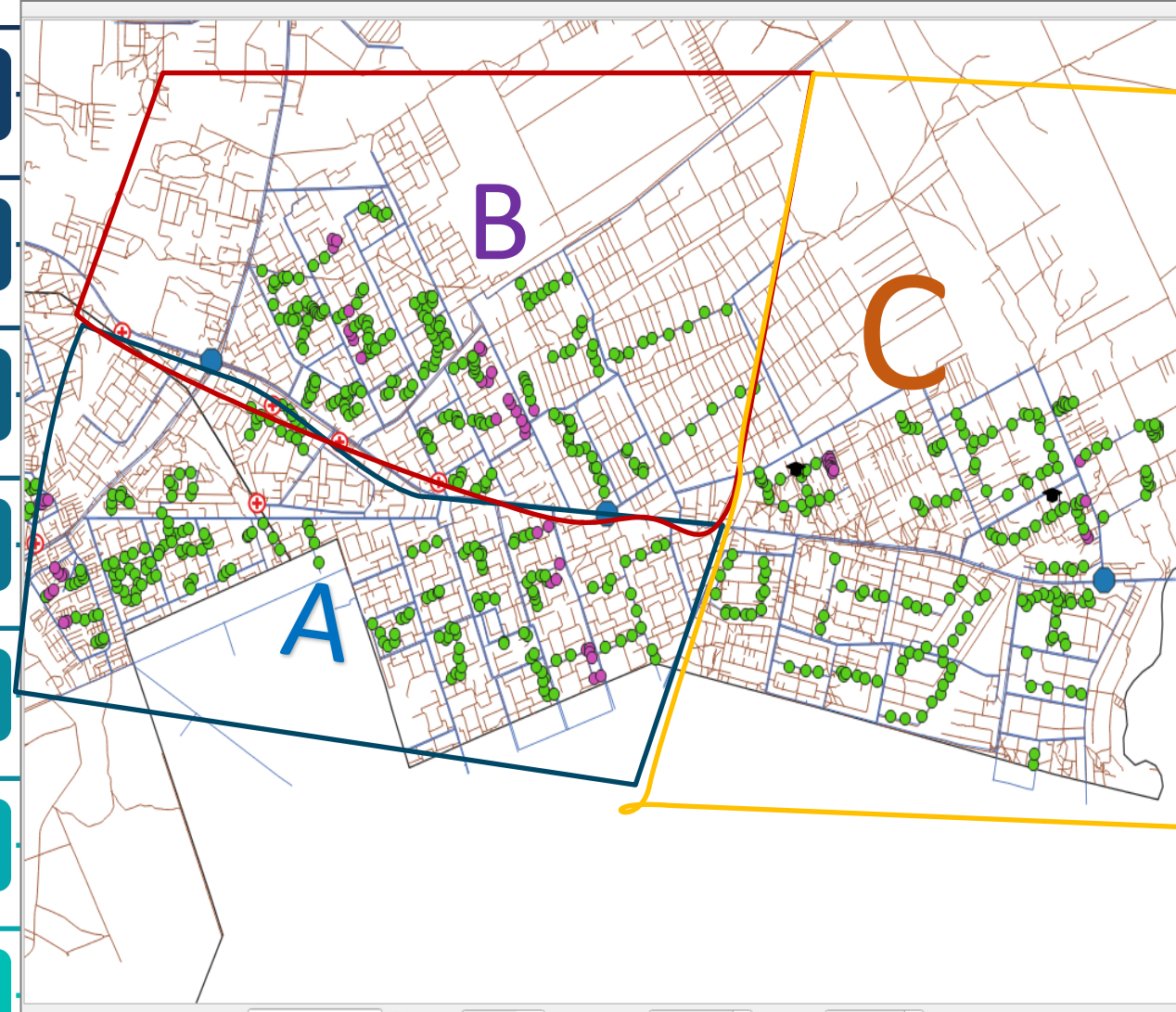
Custodian of system

Data collection responsibilities

Verification of data

Reporting Requirements

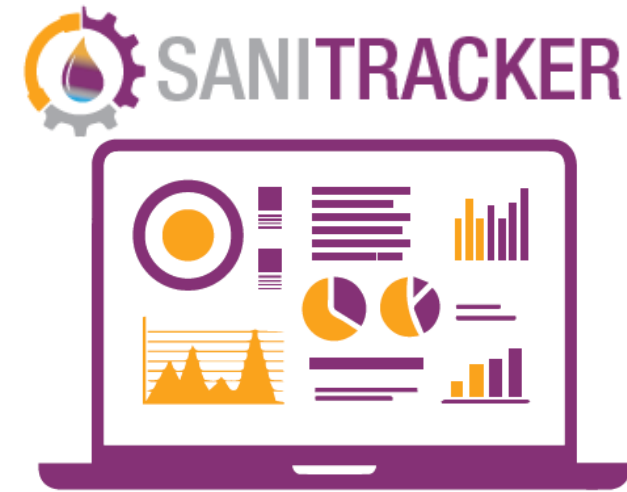
Build capacity



CWIS FRAMEWORK INSTRUMENTS AND TOOLS

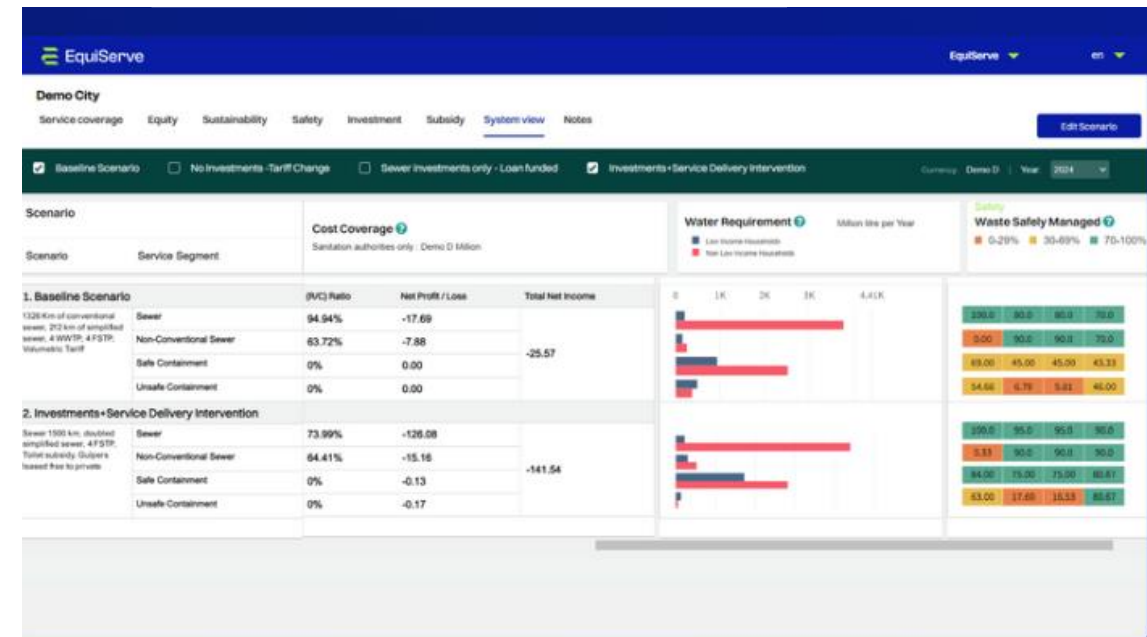
■ SaniTracker tool

Digital on-demand tool for sanitation service request (client), provision (service provider), monitoring (licensed utility and regulator)- *the 'Uber' of sanitation for private sector to strengthen data collection at the local level*



■ EquiServe (Service Assessment and Planning) tool

To *inform decision making* for different interventions and effect on three CWIS outcomes: equity, safety and sustainability



Q&A & Ideation activity 2

MODERATOR: BATSIRAI MAJURU

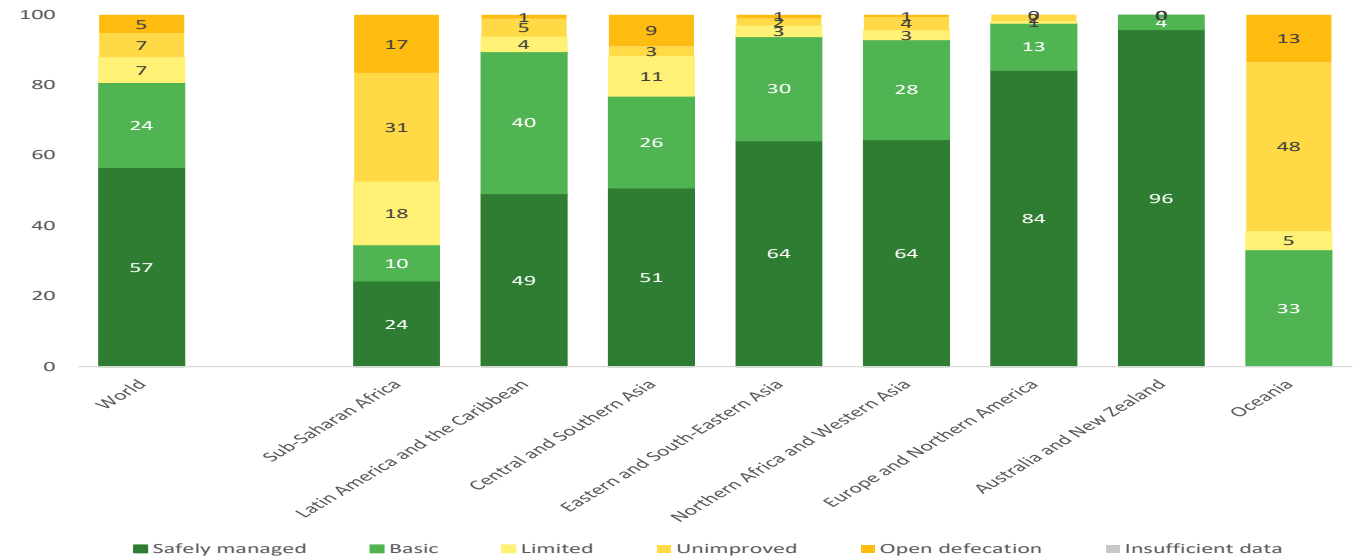
Global efforts and monitoring sanitation for SDGs

FRANCESCO MITIS, WHO/JMP



LAST JMP PROGRESS REPORT SAYS THAT...

- In 2022, 57% of the global population used safely managed sanitation services, 46% rural and 65% urban.
- 3.5 billion people lacked safely managed sanitation, including 1.9 with basic services, 570 million with limited services, 545 million with unimproved services and 419 million practising open defecation.
- Estimates for safely managed services were available for 135 countries and seven out of eight SDG regions, representing 86% of the global population.
- Achieving universal access to safely managed services by 2030 will require a fivefold increase in current rates of progress (16-fold in least developed countries, 15-fold in fragile contexts).



SERVICE LEVEL	DEFINITION
SAFELY MANAGED	Use of improved facilities that are not shared with other households and where excreta are safely disposed of in situ or removed and treated off-site
BASIC	Use of improved facilities that are not shared with other households
LIMITED	Use of improved facilities that are shared with other households
UNIMPROVED	Use of pit latrines without a slab or platform, hanging latrines or bucket latrines
OPEN DEFECATION	Disposal of human faeces in fields, forests, bushes, open bodies of water, beaches or other open places, or with solid waste



LAST JMP PROGRESS REPORT SAYS THAT...

In 2022, 135 countries had estimates for safely managed sanitation services

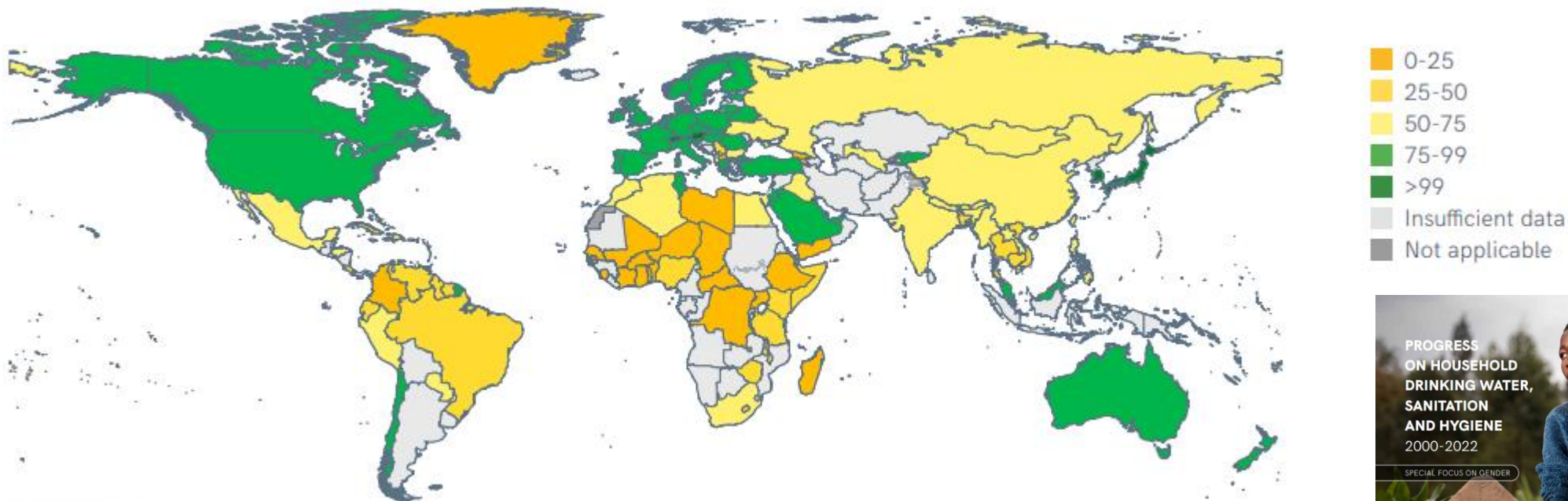


FIGURE 5 Proportion of population using safely managed sanitation services, 2022 (%)

Main data gap is on onsite sanitation



TOOLS TO IMPROVE ONSITE SANITATION MONITORING/1

■ MICS7 – questions on containment

WS11B. Does your (<i>answer from WS11</i>) have an outlet pipe for liquid waste? <i>If there is infiltration underground from the base or sides of the tank or pit, select "No"</i> <i>If the tank or pit containing wastes has a pipe which discharges liquid wastes, select "Yes"</i>	YES..... 1	2 ⇒ WS11D
	NO 2	
	DK 8	
WS11C. Where does this pipe go?	TO A LEACH FIELD, SOAK PIT 11	
	TO A SEWER / CLOSED DRAIN THAT LEADS TO A WASTEWATER TREATMENT PLANT (WWTP) 21	
	A WATERBODY (NOT CONNECTED TO WWTP) 22	
	DON'T KNOW WHERE 23	
	TO AN OPEN DRAIN 31	
	TO A WATERBODY/SURFACE 32	
	OTHER (<i>specify</i>) 96	
DON'T KNOW 98		

WS11D. In the last year, have excreta from your (<i>answer from WS11</i>) been released to the surface and surroundings due to any of the following events?		YES	NO	DK
	[A] Overflowed?	OVERFLOWED.....	1	2
[B] Flooded?	FLOODED	1	2	8
[C] Containment collapsed?	CONTAINMENT COLLAPSED	1	2	8
[D] Other event releasing excreta to the surface and surroundings?	OTHER EVENT.....	1	2	8
			↕	↕
			WS12	WS12
[D1] <i>Specify the other event mentioned</i>	(<i>specify</i>)			

TOOLS TO IMPROVE ONSITE SANITATION MONITORING/2

- MICS7 – questions on emptying practices

WS12. Has your <i>(answer from WS11)</i> ever been emptied?	YES, EMPTIED	1	
	NO, NEVER EMPTIED.....	4	4 ⇒WS14
	NO, NOT EMPTIED BUT COVERED AND LEFT UNDISTURBED WHEN FULL	5	5 ⇒WS14
	DK	8	8 ⇒WS14
WS12A. The last time it was emptied, who emptied the <i>(answer from WS11)</i> ?	SERVICE PROVIDER		
	PUBLIC/MUNICIPALITY/GOVERNMENT	11	
	PRIVATE COMPANY/NGO	12	
	INFORMAL EMPTIER (E.G., UNLICENSED)	13	
	NOT SERVICE PROVIDER		
	SELF EMPTIED	21	
	NEIGHBOUR, FAMILY MEMBER, FRIEND	22	
OTHER <i>(specify)</i>	96		
DK	98		

WS13. The last time it was emptied, where were the contents emptied to?	REMOVED OFF-SITE (TO TREATMENT / UNKNOWN)	1
	REMOVED TO A WATERBODY, OPEN GROUND, FIELD OR ELSEWHERE	2
<i>Probe:</i>		
Was it removed by a service provider?	BURIED IN A COVERED PIT AT OR NEAR HOUSEHOLD (IN-SITU)	3
	BURIED IN A COVERED PIT/TRENCH ELSEWHERE (OFF-SITE)	4
	EMPTIED INTO AN UNCOVERED PIT	5
	OTHER <i>(specify)</i>	6
	DK.....	8

JMP SAFELY MANAGED ON SITE SANITATION (SMOSS) PROJECT

Phase 1 pilots (2020-22):

- Bangladesh
- Ecuador
- Indonesia
- Kenya
- Serbia
- Zambia



Phase 2 guidance (2022+):

- Malawi
- Republic of Moldova
- Oman
- Nepal



- Annex A (indicators)
- Annex B (household questionnaire)
- Annex C (sanitation inspection)
- Annex D (service authority)

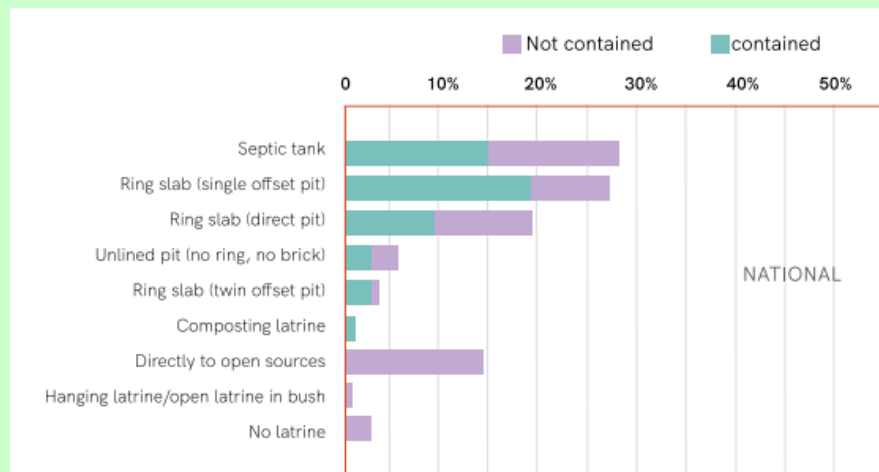
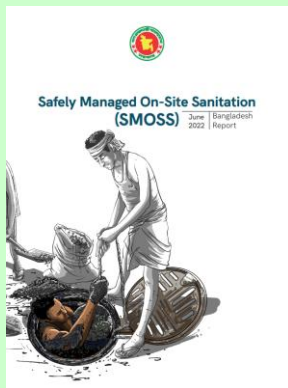
<https://washdata.org/monitoring/sanitation/safely-managed-on-site-sanitation>

JMP SAFELY MANAGED ON SITE SANITATION (SMOSS) PROJECT/SOME RESULTS

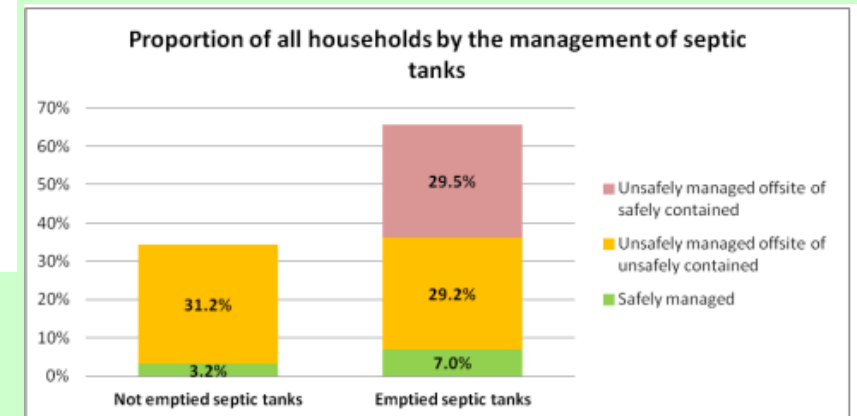
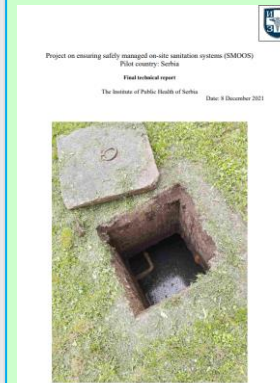
- Key message

FSM programming focuses a lot on what happens once faecal sludge is pumped out of a tank, but by that time there has already been widespread faecal contamination through poor (or inexistent) containment

Bangladesh



Serbia



UNDERSTANDING GLOBAL VS NATIONAL INDICATORS

	Global indicators	Examples of optional local indicators for national monitoring
Containment	Containment is not overflowing or discharging waste directly to the surface environment	<ul style="list-style-type: none"> - Design standards: sealed cover, wall and base material or permeability, chambers, dimensions, outlet type - Functionality: damage, blockage, leaks, sludge depth - Groundwater risk: proximity to wells, depth of groundwater, soil characteristics density (volume/area requirements for infiltration)
Disposed in-situ	Contained, not emptied	<ul style="list-style-type: none"> - Function: Years operation, size, sludge depth, - Risks: Groundwater risk, flood risk
	Contained, emptied, buried in-situ	<ul style="list-style-type: none"> - Location: on/off premises, distance from house - Safety: covered, how buried, buried in rainy season, groundwater risk, proximity to waterways / residents - Reuse: contents used after less than 2 years storage
Emptying	If containment ever emptied	<ul style="list-style-type: none"> - Emptying frequency: years, regular or scheduled - Method: manual, mechanical (type of equipment) - Safety to workers: PPE/protection, not entering pit - Safety to user/public: no spillage, flushed to drain - Accessibility: location of containment, presence of lid/manhole, street access
Transport	Excreta delivered to off-site treatment facility	<ul style="list-style-type: none"> - Method of transport: manual (cart), motorized, - Safety to workers: PPE/protection during transport - Safety to user/public: no spillage, covered transport, vehicles not used for water supply
Treatment	Designed to provide treatment for both solid and liquid phase	<ul style="list-style-type: none"> - Design standards: meets national standards for faecal sludge treatment facilities; treatment adequately level for the risk of exposure to the effluent - Function: Systems function, not overloaded/ reasonable capacity, not damaged, leaking, overflowing or bypassed.

DRAWING ON MULTIPLE SOURCES OF DATA

Service chain Data collection method	Facility type	Containment	Emptying	Transport	Treatment
Household questionnaire	High	Medium	High	In-situ only	Low
Household sanitary inspection	High	High	Low	Low	Low
Data from local government (e.g. Administrative data)	Low	Medium	High	High	High
Data from service providers (e.g. via regulators)	Low	Low	High	High	High
Spot checks / inspections of service chain	Low	Low	Medium	Medium	Medium

Levels of reliability and use of source

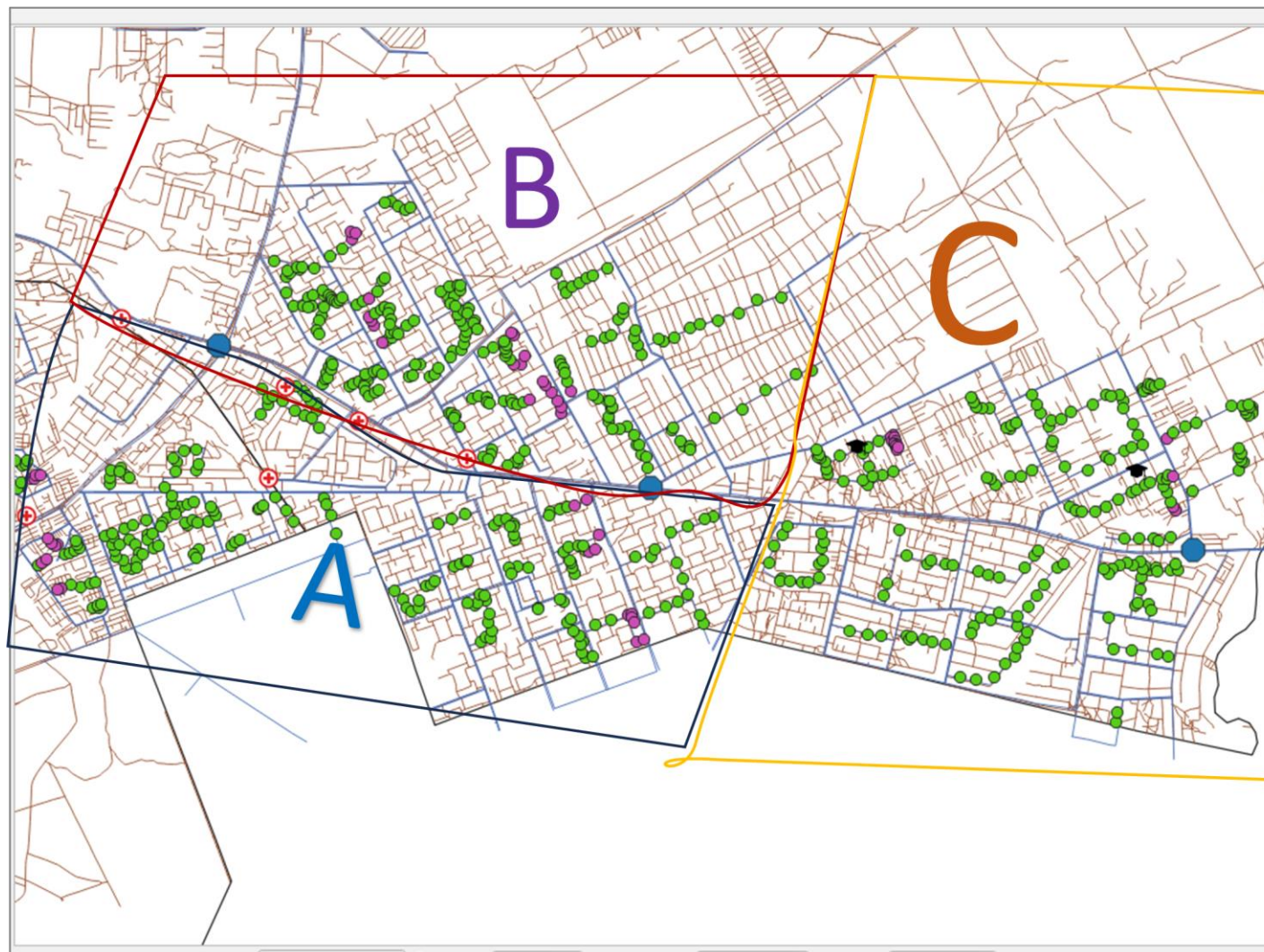
Low



High

Q&A & Ideation activity 3

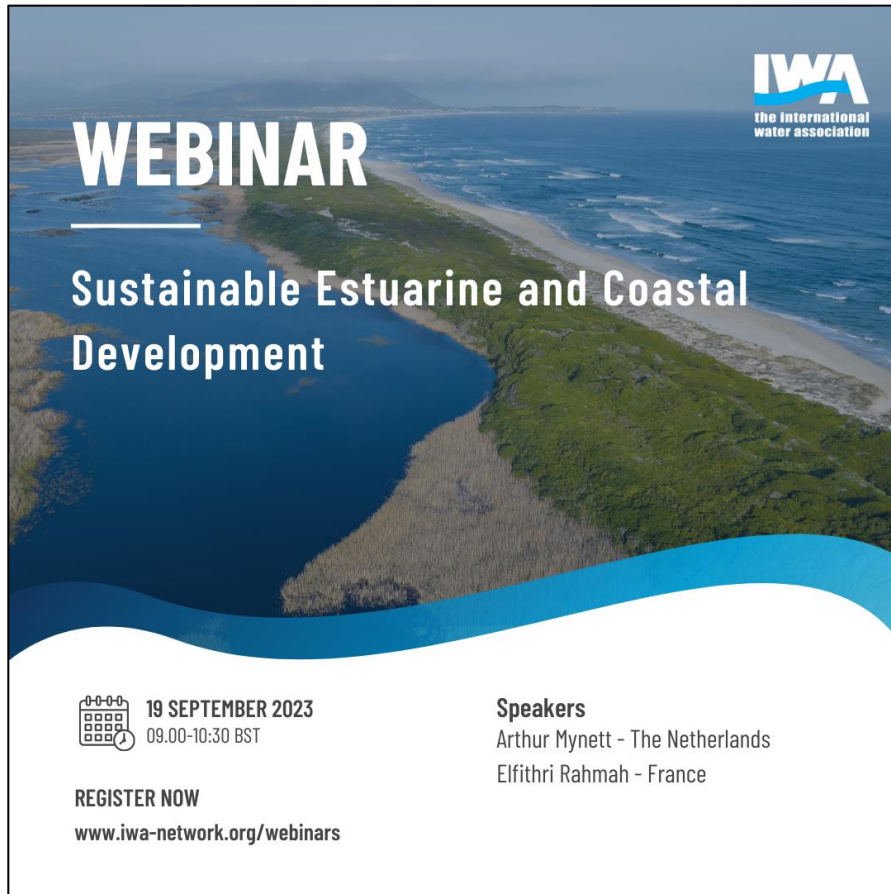
MODERATOR: BATSIRAI MAJURU



Final remarks & Conclusion

MODERATOR: BATSIRAI MAJURU


UPCOMING IWA WEBINARS & EVENTS



WEBINAR

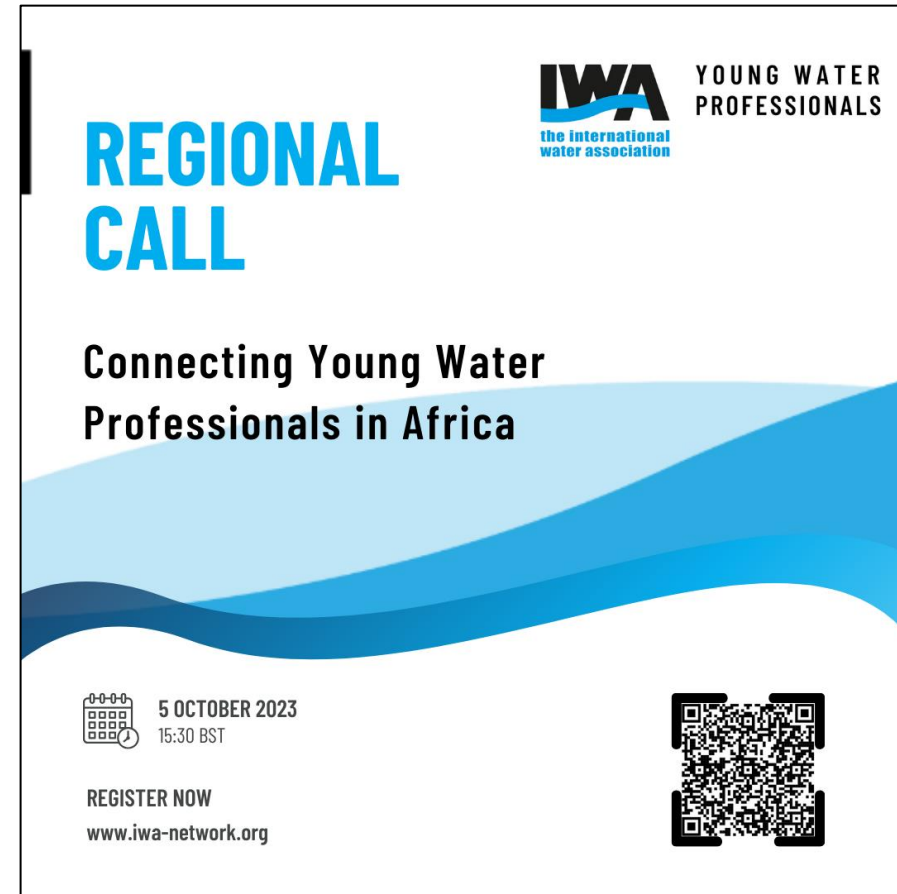
Sustainable Estuarine and Coastal Development

IWA
the international
water association

 **19 SEPTEMBER 2023**
09.00-10:30 BST

Speakers
Arthur Mynett - The Netherlands
Elfithri Rahmah - France


REGISTER NOW
www.iwa-network.org/webinars




REGIONAL CALL

Connecting Young Water Professionals in Africa

IWA YOUNG WATER PROFESSIONALS
the international water association

 **5 OCTOBER 2023**
15:30 BST

REGISTER NOW
www.iwa-network.org



Learn more about future online events at
<http://www.iwa-network.org/iwa-learn/>

UPCOMING IWA WEBINARS & EVENTS



1st IWA Non-Sewered Sanitation Conference

the international water association

Concepts and Perspectives: Framework for Water Wise and Sanitation Secure Resilient Cities

 **15 October 2023**
15:30 - 17:00 GMT +2
Johannesburg, South Africa

Speakers
Eden Mati, WSUP - Kenya
Amit Chanan, WAF - Fiji
Temple Oraeki, YWP - Nigeria

EVENT INFO
nssconference.org

Learn more at
<https://nssconference.org/>

UPCOMING IWA WEBINARS & EVENTS



IWA
the international
water association

IWA Digital Water Summit

BILBAO SPAIN

14-16 November 2023

The Latest in Digital Developments

www.digitalwatersummit.org

REGISTRATION IS OPEN!



Find out more at:

<https://digitalwatersummit.org/>

UPCOMING IWA WEBINARS & EVENTS



Find out more at:

<https://waterdevelopmentcongress.org/>

UPCOMING IWA WEBINARS & EVENTS



IWA the international water association **WATER AND DEVELOPMENT CONGRESS & EXHIBITION** 10-14 December 2023 KIGALI RWANDA

WORKSHOP

Monitoring Safely Managed On Site Sanitation

Part 1: Setting Priorities for Global and Local Indicators and Methods for Monitoring On Site Sanitation

12 December 2023
13:30 - 15:00 Local time

REGISTER NOW
waterdevelopmentcongress.org

IWA the international water association **WATER AND DEVELOPMENT CONGRESS & EXHIBITION** 10-14 December 2023 KIGALI RWANDA

WORKSHOP

Monitoring Safely Managed On Site Sanitation

Part 2: Strengthening Sanitation Data, Monitoring and Accountability

12 December 2023
15:30 - 17:00 Local time

REGISTER NOW
waterdevelopmentcongress.org

Learn more at
<https://waterdevelopmentcongress.org/>

JOIN OUR NETWORK OF WATER PROFESSIONALS!



IWA brings professionals from many disciplines together to accelerate the science, innovation and practice that can make a difference in addressing water challenges.

Use code **WEB23RECRUIT**

for a **20% discount off**
new membership.

Join before 31 December 2023 at:

www.iwa-connect.org

inspiring change

